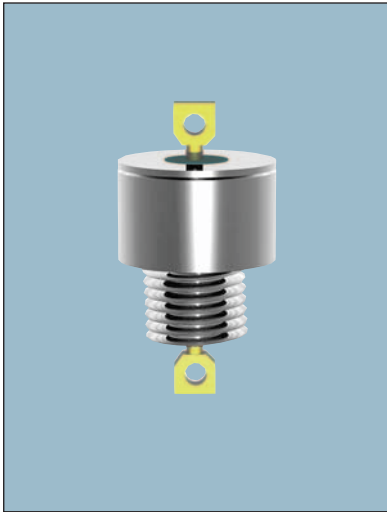


Cylindrical Style EMI Filters

CK Series – .375 Dia. – Button Hermetically Sealed – Circuits Available – C & L



APPLICATIONS

The CK series offers effective filtering from 100 KHz to 10 GHz. Glass sealed for hermeticity, this medium profile series is impervious to high moisture, solvents, or other severe environmental conditions commonly encountered in military applications. It is designed for bulkhead mounting in a slotted hole with nut and lockwasher supplied. This series is ideal for low to medium impedance circuits where large amounts of capacitance to

ground can be tolerated. In the “L” section version an internal ferrite bead element provides both inductance and series resistance (lossy characteristic) which improves insertion loss and provides superior transient performance.

Alternate lead configurations or special capacitance values may be ordered.

Custom packages or filter arrays utilizing the CK series can be furnished.

CHARACTERISTICS

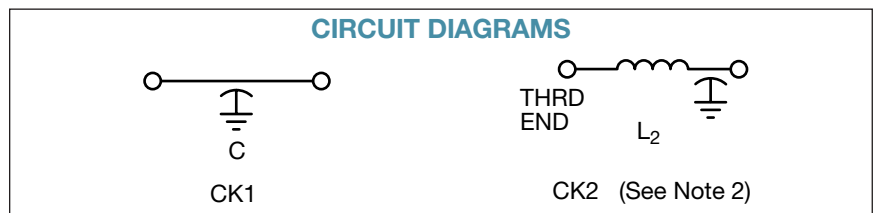
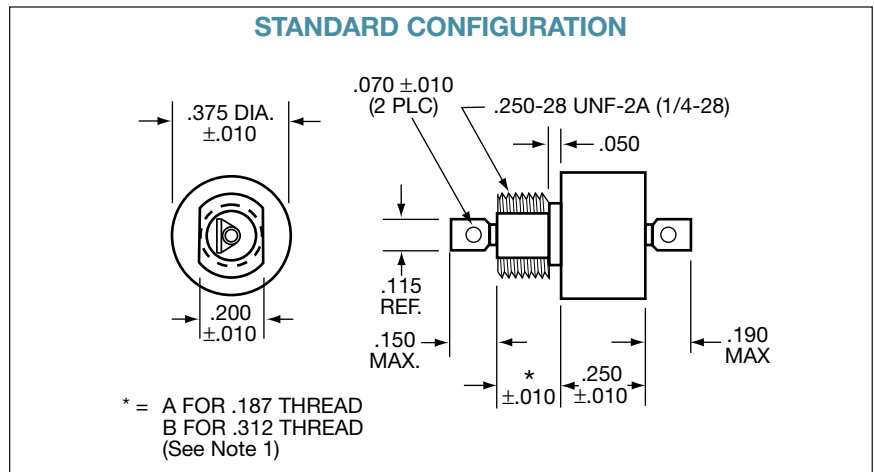
- Meets or exceeds the applicable requirements of MIL-F-15733, and the environmental/test requirements of MIL-F-28861.
- Glass hermetic seal on both ends.
- Internal ferrite bead provides inductance

for the L-section version.

- High DC current rating: 15 Amps.
- High capacitance values available.
- Conservatively rated for 125 VAC/400 Hz in certain values.

SPECIFICATIONS

- Case/Terminal Plating:
Electro-tin standard –
Silver or gold available
- Material:
Case: Brass standard – Steel available
End Seal: Mild steel
Terminals: Nickel-iron alloy
- Operating Temperature Range:
-55°C to +125°C
- Electrical Characteristics:
 - Rated Voltage: See chart
 - Insulation Resistance:
At 25°C: 1,000 megohm-microfarad min.,
or 50,000 megohms min.,
whichever is less, at the rated DC voltage
At 125°C: 100 megohm-microfarad min.,
or 5,000 megohms min.,
whichever is less
 - Dielectric Withstanding Voltage (DWV):
R-level designs:
2.0 times rated DC voltage
Class B, Class S designs:
2.5 times rated DC voltage
 - Capacitance: Values listed in chart are
“guaranteed minimum value” (GMV)
- Marking:
Standard Marking: AVX, AVX part number,
rated current, voltage, lot code
B. CK2 only: Letter “L” to denote ferrite bead
inductor at threaded end
C. See Reliability Codes section for definition
of Reliability Level marking. See How to
Order section for part number construction.
- Installation:
 - Mounting Torque: 44 oz-in. ± 4 oz-in.
 - Refer to “Installation, Handling, Hardware
Options” section of the catalog.



millimeters (inches)

0.25 (.010)	4.83 (.190)
1.27 (.050)	5.08 (.200)
1.78 (.070)	6.35 (.250)
2.92 (.115)	7.93 (.312)
3.81 (.150)	9.53 (.375)
4.75 (.187)	—

(See Note 3)

Notes:

- Thread length option.
EXAMPLE: CK1CA-103
(.187 thrd. L)
CK1CB-103
(.312 thrd. L).
- All CK2 L-Section Filters have inductor (bead) at threaded end.
- Metric equivalent dimensions given for information only.

Cylindrical Style EMI Filters

CK Series – .375 Dia. – Button Hermetically Sealed – Circuits Available – C & L



SPECIFICATIONS

AVX P/N	Current AMP	CKT	CAP ¹	DC Voltage	Insertion Loss ² Per MIL-STD-220, +25°C						
					30 KHz	150 KHz	500 KHz	1 MHz	10 MHz	100 MHz	1 GHz
CK1CA-754	15	C	.75	50	11	24	30	40	40	64	70
CK1CA-105	15	C	1.0	50	12	24	30	40	40	65	70
CK1CA-145	15	C	1.4	50	15	28	33	40	40	70	70
CK1CA-205	15	C	2.0	50	16	30	35	43	45	70	70
CK2CA-754	15	L2	.75	50	11	24	30	40	40	64	70
CK2CA-105	15	L2	1.0	50	12	24	30	40	40	65	70
CK2CA-145	15	L2	1.4	50	15	28	33	40	40	70	70
CK2CA-205	15	L2	2.0	50	16	30	35	43	45	70	70
CK1AA-504	15	C	.5	100	–	16	26	34	42	58	70
CK1AA-754	15	C	.75	100	11	24	30	40	40	64	70
CK1AA-105	15	C	1.0	100	12	24	30	40	40	65	70
CK1AA-185	15	C	1.8	100	15	28	33	41	45	70	70
CK2AA-504	15	L2	.5	100	–	16	26	36	44	60	70
CK2AA-754	15	L2	.75	100	11	24	30	40	40	64	70
CK2AA-105	15	L2	1.0	100	12	24	30	40	40	65	70
CK2AA-185	15	L2	1.8	100	15	28	33	41	45	70	70
CK1BA-103	15	C	.01	200	–	–	–	2	20	40	55
CK1LA-753	15	C	.075	200*	–	–	7	18	37	46	70
CK1BA-104	15	C	.1	200	–	–	14	24	38	50	70
CK1LA-154	15	C	.15	200*	–	10	16	26	40	52	70
CK1BA-304	15	C	.3	200	–	15	23	32	40	56	70
CK1BA-504	15	C	.5	200	6	19	25	36	40	58	70
CK2BA-103	15	L2	.01	200	–	–	–	2	20	40	55
CK2LA-753	15	L2	.075	200*	–	–	7	18	37	51	70
CK2BA-104	15	L2	.1	200	–	–	14	24	38	50	70
CK2LA-154	15	L2	.15	200*	–	10	16	26	40	52	70
CK2BA-304	15	L2	.3	200	–	15	23	32	40	56	70
CK2BA-504	15	L2	.5	200	6	19	25	36	40	60	70

* Also rated 125 VAC/400 Hz

¹ Decimal point values indicate capacitance in microfarads.
Non-decimal point values indicate capacitance in picofarads.

² Insertion loss limits are based on theoretical values.
Actual measurements may vary due to internal capacitor
resonances and other design constraints.