

# High Voltage Ceramic Capacitors



## HP/HW/HK Type – Strontium-based Dielectric

### FEATURES

- Excellent behavior on pulse and fast discharge conditions
- Excellent capacitance vs voltage characteristic
- Low dissipation factor
- Very low Corona effect
- Coated and uncoated devices available

### APPLICATIONS

- High-voltage supply for gas lasers
- High-voltage dividers
- Marx generators
- Power generators
- High-voltage power supply
- High-voltage coupling devices
- Power line coupling system for Internet & Telecom

### TECHNOLOGY

- **HP** range: Coated capacitor with fixtures
- **HW** range: Uncoated capacitor with fixtures
- **HK** range: Uncoated capacitor without fixtures
- Fixtures: M5
- Marking: on each part: type – capacitance – rated voltage
- Delivery mode: bulk in carton box
- Dielectric Type II: N4700 class (see typical curves page 13)



### DIELECTRIC CHARACTERISTICS

| TPC code  | E                   |
|---|---------------------|
| Dielectric class (DIN)                                  | N4700               |
| Operating temperature range (°C)                        | -30/+85°C           |
| Capacitance change with temperature (%)                 | +22/-33%            |
| Typical dielectric constant                             | 1850                |
| Dielectric strength<br>kV <sub>DC</sub> /mm             | 8.0                 |
| Dissipation factor<br>(1kHz/1V <sub>RMS</sub> /20°C)    | 20.10 <sup>-4</sup> |
| Insulation resistance<br>(1000V <sub>D</sub> /20°C/60s) | >100GΩ              |

### ELECTRICAL CHARACTERISTICS

|   |                                    |
|---|------------------------------------|
| Rated voltage (V <sub>R</sub> )                         | 15 to 100 kVdc*                    |
| Test voltage (V <sub>E</sub> )<br>(50Hz, in oil, 60s)   | 12 to 80 kVrms                     |
| Operating Temperature ranges                            | -30 +85°C                          |
| Temperature characteristic                              | N4700                              |
| Dissipation factor<br>(20°C, 1kHz, 1V <sub>RMS</sub> )  | <20.10 <sup>-4</sup>               |
| Insulation resistance<br>(1000Vdc/60s)                  | >100GΩ                             |
| Capacitance range<br>(20°C – 1kHz – 1V <sub>RMS</sub> ) | 195pF to 5600pF                    |
| Tolerance   | Standard: ±20%<br>On request: ±10% |
| Self-inductance   | L <sub>S</sub> ≤ 30nH              |

\*up to 150kVdc: upon request

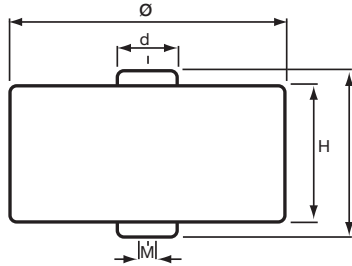
# High Voltage Ceramic Capacitors



## HP/HW/HK Type – Strontium-based Dielectric

### HP RANGE: COATED DEVICES WITH FIXTURES

### REFERENCES – VOLTAGE AND CAPACITANCE RANGE



All fixtures: M5  
(0.197)

| Part Number    | Rated Voltage<br>kVdc | Rated Voltage<br>kVrms | Test Voltage<br>kVrms | Corona Inception Voltage<br>(kVrms)<br>(<10pc) | Capacitance<br>±20%<br>(pF)<br>±10%<br>on request | Dimensions millimeters (inches) |            |            |            | Packaging Unit |     |            |            |            |            |    |
|----------------|-----------------------|------------------------|-----------------------|--|---|---------------------------------|------------|------------|------------|----------------|-----|------------|------------|------------|------------|----|
|                |                       |                        |                       |  |   | Ø ± 1                           | d          | L ± 1      | H ± 2      |                |     |            |            |            |            |    |
| HP30EX0561M -- | 15                    | 10                     | 12                    | 6  | 560   | 28 (1.100)                      | 12 (0.472) | 22 (0.866) | 16 (0.630) | 40             |     |            |            |            |            |    |
| HP30EX0751M -- |                       |                        |                       |  | 750   | 28 (1.100)                      | 12 (0.472) |            |            | 40             |     |            |            |            |            |    |
| HP30EX0102M -- |                       |                        |                       |  | 1000  | 28 (1.100)                      | 12 (0.472) |            |            | 40             |     |            |            |            |            |    |
| HP40EX0152M -- |                       |                        |                       |  | 1500  | 38 (1.500)                      | 12 (0.472) |            |            | 40             |     |            |            |            |            |    |
| HP40EX0182M -- |                       |                        |                       |  | 1800  | 38 (1.500)                      | 12 (0.472) |            |            | 40             |     |            |            |            |            |    |
| HP40EX0202M -- |                       |                        |                       |  | 2000  | 38 (1.500)                      | 12 (0.472) |            |            | 40             |     |            |            |            |            |    |
| HP50EX0252M -- |                       |                        |                       |  | 2500  | 48 (1.900)                      | 12 (0.472) |            |            | 45             |     |            |            |            |            |    |
| HP50EX0272M -- |                       |                        |                       |  | 2700  | 48 (1.900)                      | 12 (0.472) |            |            | 45             |     |            |            |            |            |    |
| HP50EX0332M -- |                       |                        |                       |  | 3300  | 48 (1.900)                      | 12 (0.472) |            |            | 45             |     |            |            |            |            |    |
| HP60EX0372M -- |                       |                        |                       |  | 3700  | 58 (2.283)                      | 15 (0.591) |            |            | 20             |     |            |            |            |            |    |
| HP60EX0402M -- |                       |                        |                       |  | 4000  | 58 (2.283)                      | 15 (0.591) |            |            | 20             |     |            |            |            |            |    |
| HP60EX0502M -- |                       |                        |                       |  | 5000  | 58 (2.283)                      | 15 (0.591) |            |            | 20             |     |            |            |            |            |    |
| HP60EX0562M -- | 5600                  | 58 (2.283)             | 15 (0.591)            | 20   |   |                                 |            |            |            |                |     |            |            |            |            |    |
| HP30EY0501M -- | 20                    | 15                     | 18                    | 9  | 500   | 28 (1.100)                      | 12 (0.472) | 24 (0.945) | 18 (0.709) | 40             |     |            |            |            |            |    |
| HP30EY0561M -- |                       |                        |                       |  | 560   | 28 (1.100)                      | 12 (0.472) |            |            | 40             |     |            |            |            |            |    |
| HP30EY0751M -- |                       |                        |                       |  | 750   | 28 (1.100)                      | 12 (0.472) |            |            | 40             |     |            |            |            |            |    |
| HP40EY0102M -- |                       |                        |                       |  | 1000  | 38 (1.500)                      | 12 (0.472) |            |            | 40             |     |            |            |            |            |    |
| HP40EY0132M -- |                       |                        |                       |  | 1300  | 38 (1.500)                      | 12 (0.472) |            |            | 40             |     |            |            |            |            |    |
| HP40EY0152M -- |                       |                        |                       |  | 1500  | 38 (1.500)                      | 12 (0.472) |            |            | 40             |     |            |            |            |            |    |
| HP50EY0202M -- |                       |                        |                       |  | 2000  | 48 (1.900)                      | 12 (0.472) |            |            | 45             |     |            |            |            |            |    |
| HP50EY0222M -- |                       |                        |                       |  | 2200  | 48 (1.900)                      | 12 (0.472) |            |            | 45             |     |            |            |            |            |    |
| HP50EY0252M -- |                       |                        |                       |  | 2500  | 48 (1.900)                      | 12 (0.472) |            |            | 45             |     |            |            |            |            |    |
| HP60EY0302M -- |                       |                        |                       |  | 3000  | 58 (2.283)                      | 15 (0.591) |            |            | 20             |     |            |            |            |            |    |
| HP60EY0332M -- |                       |                        |                       |  | 3300  | 58 (2.283)                      | 15 (0.591) |            |            | 20             |     |            |            |            |            |    |
| HP60EY0372M -- |                       |                        |                       |  | 3700  | 58 (2.283)                      | 15 (0.591) |            |            | 20             |     |            |            |            |            |    |
| HP60EY0402M -- | 4000                  | 58 (2.283)             | 15 (0.591)            | 20   |   |                                 |            |            |            |                |     |            |            |            |            |    |
| HP30E30561M -- | 30                    | 20                     | 24                    | 12   | 560   | 28 (1.100)                      | 12 (0.472) | 26 (1.024) | 20 (0.787) | 40             |     |            |            |            |            |    |
| HP40E30821M -- |                       |                        |                       |  | 820   | 38 (1.500)                      | 12 (0.472) |            |            | 40             |     |            |            |            |            |    |
| HP40E30102M -- |                       |                        |                       |  | 1000  | 38 (1.500)                      | 12 (0.472) |            |            | 40             |     |            |            |            |            |    |
| HP40E31121M -- |                       |                        |                       |  | 1120  | 38 (1.500)                      | 12 (0.472) |            |            | 40             |     |            |            |            |            |    |
| HP50E30152M -- |                       |                        |                       |  | 1500  | 48 (1.900)                      | 12 (0.472) |            |            | 45             |     |            |            |            |            |    |
| HP50E30172M -- |                       |                        |                       |  | 1700  | 48 (1.900)                      | 12 (0.472) |            |            | 45             |     |            |            |            |            |    |
| HP50E30202M -- |                       |                        |                       |  | 2000  | 48 (1.900)                      | 12 (0.472) |            |            | 45             |     |            |            |            |            |    |
| HP60E30272M -- |                       |                        |                       |  | 2700  | 58 (2.283)                      | 15 (0.591) |            |            | 20             |     |            |            |            |            |    |
| HP60E30302M -- |                       |                        |                       |  | 3000  | 58 (2.283)                      | 15 (0.591) |            |            | 20             |     |            |            |            |            |    |
| HP60E30332M -- |                       |                        |                       |  | 3300  | 58 (2.283)                      | 15 (0.591) |            |            | 20             |     |            |            |            |            |    |
| HP30E40391M -- |                       |                        |                       |  | 40  | 28                              | 33         |            |            | 17             | 390 | 28 (1.100) | 12 (0.472) | 30 (1.180) | 24 (0.945) | 40 |
| HP40E40751M -- |                       |                        |                       |  |   |                                 |            |            |            |                | 750 | 38 (1.500) | 12 (0.472) |            |            | 40 |
| HP50E40102M -- | 1000                  | 48 (1.900)             | 12 (0.472)            | 30   |   |                                 |            |            |            |                |     |            |            |            |            |    |
| HP50E40142M -- | 1400                  | 48 (1.900)             | 12 (0.472)            | 30   |   |                                 |            |            |            |                |     |            |            |            |            |    |
| HP60E40172M -- | 1700                  | 58 (2.283)             | 15 (0.591)            | 20   |   |                                 |            |            |            |                |     |            |            |            |            |    |
| HP60E40202M -- | 2000                  | 58 (2.283)             | 15 (0.591)            | 20   |   |                                 |            |            |            |                |     |            |            |            |            |    |
| HP60E40242M -- | 2400                  | 58 (2.283)             | 15 (0.591)            | 20   |   |                                 |            |            |            |                |     |            |            |            |            |    |

-Other tolerance on capacitance value: please consult us

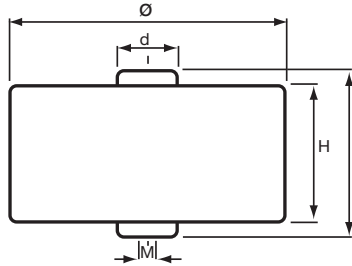
# High Voltage Ceramic Capacitors



## HP/HW/HK Type – Strontium-based Dielectric

### HP RANGE: COATED DEVICES WITH FIXTURES

### REFERENCES – VOLTAGE AND CAPACITANCE RANGE



All fixtures: M5  
(0.197)

| Part Number    | Rated Voltage<br>kVdc | Rated Voltage<br>kVrms | Test Voltage<br>kVrms | Corona Inception Voltage<br>(kVrms)<br>(<10pc) | Capacitance<br>±20%<br>(pF)<br>±10%<br>on request | Dimensions millimeters (inches) |            |              |            | Packaging Unit |
|----------------|-----------------------|------------------------|-----------------------|--|---|---------------------------------|------------|--------------|------------|----------------|
|                |                       |                        |                       |  |   | Ø ± 1                           | d          | L ± 1        | H ± 2      |                |
| HP30E50281M -- | 50                    | 35                     | 42                    | 21   | 280   | 28 (1.100)                      | 12 (0.472) | 37 (1.457)   | 31 (1.221) | X              |
| HP40E50411M -- |                       |                        |                       |  | 410   | 38 (1.500)                      | 12 (0.472) |              |            |                |
| HP40E50501M -- |                       |                        |                       |  | 500   | 38 (1.500)                      | 12 (0.472) |              |            |                |
| HP40E50561M -- |                       |                        |                       |  | 560   | 38 (1.500)                      | 12 (0.472) |              |            |                |
| HP50E50751M -- |                       |                        |                       |  | 750   | 48 (1.900)                      | 12 (0.472) |              |            |                |
| HP50E50851M -- |                       |                        |                       |  | 850   | 48 (1.900)                      | 12 (0.472) |              |            |                |
| HP50E50102M -- |                       |                        |                       |  | 1000  | 48 (1.900)                      | 12 (0.472) |              |            |                |
| HP60E51351M -- |                       |                        |                       |  | 1350  | 58 (2.283)                      | 15 (0.591) |              |            |                |
| HP60E50152M -- |                       |                        |                       |  | 1500  | 58 (2.283)                      | 15 (0.591) |              |            |                |
| HP60E51651M -- |                       |                        |                       |  | 1650  | 58 (2.283)                      | 15 (0.591) |              |            |                |
| HP30E61950M -- | 60                    | 42                     | 50                    | 25   | 195   | 28 (1.100)                      | 12 (0.472) | 45 (1.772)   | 39 (1.536) | X              |
| HP40E63750M -- |                       |                        |                       |  | 375   | 38 (1.500)                      | 12 (0.472) |              |            |                |
| HP50E60501M -- |                       |                        |                       |  | 500   | 48 (1.900)                      | 12 (0.472) |              |            |                |
| HP50E60701M -- |                       |                        |                       |  | 700   | 48 (1.900)                      | 12 (0.472) |              |            |                |
| HP60E60851M -- |                       |                        |                       |  | 850   | 58 (2.283)                      | 15 (0.591) |              |            |                |
| HP60E60102M -- |                       |                        |                       |  | 1000  | 58 (2.283)                      | 15 (0.591) |              |            |                |
| HP60E60122M -- |                       |                        |                       |  | 1200  | 58 (2.283)                      | 15 (0.591) |              |            |                |
| HP50E90501M -- | 100                   | 70                     | 80                    | 40   | 500   | 48 (1.900)                      | 12 (0.472) | 58.5 (2.303) | 53 (2.087) | 15             |
| HP60E96750M -- |                       |                        |                       |  | 675   | 58 (2.283)                      | 15 (0.591) |              |            | 10             |
| HP60E90751M -- |                       |                        |                       |  | 750   | 58 (2.283)                      | 15 (0.591) |              |            | 10             |
| HP60E98250M -- |                       |                        |                       |  | 825   | 58 (2.283)                      | 15 (0.591) |              |            | 10             |

**NEW**

X = open request  
-Other tolerance on capacitance value: please consult us

# High Voltage Ceramic Capacitors

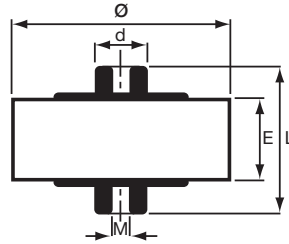


## HP/HW/HK Type – Strontium-based Dielectric

### HW RANGE: UNCOATED DEVICES WITH FIXTURES

### REFERENCES – VOLTAGE AND CAPACITANCE RANGE

Handling of uncoated devices must be done under strict cleanliness conditions.



All fixtures: M5  
(0.197)

| Part Number    | Rated Voltage (kVdc) | Rated Voltage (kVrms) | Test Voltage (kVrms)* | Corona Inception Voltage (kVrms) (<12pC)* | Capacitance ±20% (pF) ±10% on request | Dimensions millimeters (inches) |            |            | Packaging Unit |
|----------------|----------------------|-----------------------|-----------------------|---|---------------------------------------|---------------------------------|------------|------------|----------------|
|                |                      |                       |                       |   |                                       | Ø ± 2                           | L ± 1      | E ± 2      |                |
| HW30EX0561M -- | 15                   | 10                    | 12                    | 6   | 560                                   | 17 (0.670)                      | 22 (0.866) | 6 (0.236)  | 40             |
| HW30EX0751M -- |                      |                       |                       |   | 750                                   | 18 (0.719)                      |            |            | 40             |
| HW30EX0102M -- |                      |                       |                       |   | 1000                                  | 21 (0.827)                      |            |            | 40             |
| HW40EX0152M -- |                      |                       |                       |   | 1500                                  | 26 (1.024)                      |            |            | 40             |
| HW40EX0182M -- |                      |                       |                       |   | 1800                                  | 28 (1.103)                      |            |            | 40             |
| HW40EX0202M -- |                      |                       |                       |   | 2000                                  | 29 (1.142)                      |            |            | 60             |
| HW50EX0252M -- |                      |                       |                       |   | 2500                                  | 34 (1.339)                      |            |            | 45             |
| HW50EX0272M -- |                      |                       |                       |   | 2700                                  | 35 (1.378)                      |            |            | 45             |
| HW50EX0332M -- |                      |                       |                       |   | 3300                                  | 38 (1.496)                      |            |            | 45             |
| HW60EX0372M -- |                      |                       |                       |   | 3700                                  | 41 (1.614)                      |            |            | 30             |
| HW60EX0402M -- |                      |                       |                       |   | 4000                                  | 43 (1.692)                      |            |            | 30             |
| HW60EX0502M -- |                      |                       |                       |   | 5000                                  | 47 (1.850)                      |            |            | 30             |
| HW60EX0562M -- | 5600                 | 49 (1.929)            | 30                    |   |                                       |                                 |            |            |                |
| HW30EY0501M -- | 20                   | 15                    | 18                    | 9   | 500                                   | 17 (0.670)                      | 24 (0.945) | 8 (0.314)  | 40             |
| HW30EY0561M -- |                      |                       |                       |   | 560                                   | 18 (0.719)                      |            |            | 40             |
| HW30EY0751M -- |                      |                       |                       |   | 750                                   | 21 (0.827)                      |            |            | 40             |
| HW40EY0102M -- |                      |                       |                       |   | 1000                                  | 26 (1.024)                      |            |            | 40             |
| HW40EY0132M -- |                      |                       |                       |   | 1300                                  | 28 (1.103)                      |            |            | 40             |
| HW40EY0152M -- |                      |                       |                       |   | 1500                                  | 29 (1.142)                      |            |            | 40             |
| HW50EY0202M -- |                      |                       |                       |   | 2000                                  | 34 (1.339)                      |            |            | 45             |
| HW50EY0222M -- |                      |                       |                       |   | 2200                                  | 35 (1.378)                      |            |            | 45             |
| HW50EY0252M -- |                      |                       |                       |   | 2500                                  | 38 (1.496)                      |            |            | 45             |
| HW60EY0302M -- |                      |                       |                       |   | 3000                                  | 41 (1.614)                      |            |            | 20             |
| HW60EY0332M -- |                      |                       |                       |   | 3300                                  | 43 (1.692)                      |            |            | 20             |
| HW60EY0372M -- |                      |                       |                       |   | 3700                                  | 47 (1.850)                      |            |            | 20             |
| HW60EY0402M -- | 4000                 | 49 (1.929)            | 20                    |   |                                       |                                 |            |            |                |
| HW30E30561M -- | 30                   | 20                    | 24                    | 12  | 560                                   | 21 (0.827)                      | 26 (1.024) | 10 (0.394) | 40             |
| HW40E30821M -- |                      |                       |                       |   | 820                                   | 26 (1.024)                      |            |            | 40             |
| HW40E30102M -- |                      |                       |                       |   | 1000                                  | 28 (1.103)                      |            |            | 40             |
| HW40E31121M -- |                      |                       |                       |   | 1120                                  | 29 (1.142)                      |            |            | 40             |
| HW50E30152M -- |                      |                       |                       |   | 1500                                  | 34 (1.339)                      |            |            | 45             |
| HW50E30172M -- |                      |                       |                       |   | 1700                                  | 35 (1.378)                      |            |            | 45             |
| HW50E30202M -- |                      |                       |                       |   | 2000                                  | 38 (1.496)                      |            |            | 45             |
| HW60E30272M -- |                      |                       |                       |   | 2700                                  | 43 (1.692)                      |            |            | 20             |
| HW60E30302M -- |                      |                       |                       |   | 3000                                  | 47 (1.850)                      |            |            | 20             |
| HW60E30332M -- |                      |                       |                       |   | 3300                                  | 49 (1.929)                      |            |            | 20             |
| HW30E40391M -- | 40                   | 28                    | 33                    | 17  | 390                                   | 21 (0.827)                      | 30 (1.180) | 14 (0.552) | 40             |
| HW40E40751M -- |                      |                       |                       |   | 750                                   | 28 (1.103)                      |            |            | 40             |
| HW50E40102M -- |                      |                       |                       |   | 1000                                  | 34 (1.339)                      |            |            | 30             |
| HW50E40142M -- |                      |                       |                       |   | 1400                                  | 38 (1.496)                      |            |            | 30             |
| HW60E40172M -- |                      |                       |                       |   | 1700                                  | 41 (1.614)                      |            |            | 20             |
| HW60E40202M -- |                      |                       |                       |   | 2000                                  | 47 (1.850)                      |            |            | 20             |
| HW60E40242M -- |                      |                       |                       |   | 2400                                  | 49 (1.929)                      |            |            | 20             |

\*tested in oil or Galden

-Other tolerance on capacitance value: please consult us

# High Voltage Ceramic Capacitors

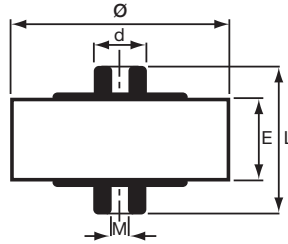


## HP/HW/HK Type – Strontium-based Dielectric

### HW RANGE: UNCOATED DEVICES WITH FIXTURES

### REFERENCES – VOLTAGE AND CAPACITANCE RANGE

Handling of uncoated devices must be done under strict cleanliness conditions.



All fixtures: M5  
(0.197)

| Part Number    | Rated Voltage (kVdc) | Rated Voltage (kVrms) | Test Voltage (kVrms)* | Corona Inception Voltage (kVrms) (<12pC)* | Capacitance ±20% (pF) ±10% on request | Dimensions millimeters (inches) |              |            | Packaging Unit |
|----------------|----------------------|-----------------------|-----------------------|---|---------------------------------------|---------------------------------|--------------|------------|----------------|
|                |                      |                       |                       |   |                                       | Ø ± 2                           | L ± 1        | E ± 2      |                |
| HW30E50281M -- | 50                   | 35                    | 42                    | 21  | 280                                   | 21 (0.827)                      | 37 (1.457)   | 21 (0.827) | X              |
| HW40E50411M -- |                      |                       |                       |   | 410                                   | 26 (1.024)                      |              |            |                |
| HW40E50501M -- |                      |                       |                       |   | 500                                   | 28 (1.103)                      |              |            |                |
| HW40E50561M -- |                      |                       |                       |   | 560                                   | 29 (1.142)                      |              |            |                |
| HW50E50751M -- |                      |                       |                       |   | 750                                   | 34 (1.339)                      |              |            |                |
| HW50E50851M -- |                      |                       |                       |   | 850                                   | 35 (1.378)                      |              |            |                |
| HW50E50102M -- |                      |                       |                       |   | 1000                                  | 38 (1.496)                      |              |            |                |
| HW60E51351M -- |                      |                       |                       |   | 1350                                  | 43 (1.692)                      |              |            |                |
| HW60E50152M -- |                      |                       |                       |   | 1500                                  | 47 (1.850)                      |              |            |                |
| HW60E51651M -- | 1650                 | 49 (1.929)            |                       |   |                                       |                                 |              |            |                |
| HW30E61950M -- | 60                   | 42                    | 50                    | 25  | 195                                   | 21 (0.827)                      | 45 (1.772)   | 29 (1.142) | X              |
| HW40E63750M -- |                      |                       |                       |   | 375                                   | 28 (1.024)                      |              |            |                |
| HW50E60501M -- |                      |                       |                       |   | 500                                   | 34 (1.339)                      |              |            |                |
| HW50E60701M -- |                      |                       |                       |   | 700                                   | 38 (1.496)                      |              |            |                |
| HW60E60851M -- |                      |                       |                       |   | 850                                   | 41 (1.614)                      |              |            |                |
| HW60E60102M -- |                      |                       |                       |   | 1000                                  | 47 (1.850)                      |              |            |                |
| HW60E60122M -- |                      |                       |                       |   | 1200                                  | 49 (1.929)                      |              |            |                |
| HW50E90501M -- | 100                  | 70                    | 80                    | 40  | 500                                   | 38 (1.496)                      | 58.5 (2.303) | 43 (1.693) | 15             |
| HW60E96750M -- |                      |                       |                       |   | 675                                   | 43 (1.693)                      |              |            | 10             |
| HW60E90751M -- |                      |                       |                       |   | 750                                   | 47 (1.850)                      |              |            | 10             |
| HW60E98250M -- |                      |                       |                       |   | 825                                   | 49 (1.929)                      |              |            | 10             |

**NEW**

\*tested in oil or Galden

X = open request

-Other tolerance on capacitance value: please consult us

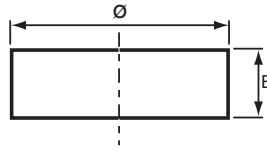
# High Voltage Ceramic Capacitors



## HP/HW/HK Type – Strontium-based Dielectric

### HK RANGE: UNCOATED DEVICES WITHOUT FIXTURES REFERENCES – VOLTAGE AND CAPACITANCE RANGE

Handling of uncoated devices must be done under strict cleanliness conditions.



| Part Number  | Rated Voltage (kVdc) | Rated Voltage (kVrms) | Test Voltage (kVrms)* | Corona Inception Voltage (kVrms) (<12pC)* | Capacitance ±20% (pF) ±10% on request  | Dimensions millimeters (inches)  |            |
|--|----------------------|-----------------------|-----------------------|---|--|--|------------|
|  |                      |                       |                       |   |  | Ø ± 2  | E ± 2      |
| HK30EX0561M --<br>HK30EX0751M --<br>HK30EX0102M --<br>HK40EX0152M --<br>HK40EX0182M --<br>HK40EX0202M --<br>HK50EX0252M --<br>HK50EX0272M --<br>HK50EX0332M --<br>HK60EX0372M --<br>HK60EX0402M --<br>HK60EX0502M --<br>HK60EX0562M -- | 15                   | 10                    | 12                    | 6   | 560<br>750<br>1000<br>1500<br>1800<br>2000<br>2500<br>2700<br>3300<br>3700<br>4000<br>5000<br>5600 | 17 (0.670)<br>18 (0.719)<br>21 (0.827)<br>26 (1.024)<br>28 (1.103)<br>29 (1.142)<br>34 (1.339)<br>35 (1.378)<br>38 (1.496)<br>41 (1.614)<br>43 (1.692)<br>47 (1.850)<br>49 (1.929) | 6 (0.236)  |
| HK30EY0501M --<br>HK30EY0561M --<br>HK30EY0751M --<br>HK40EY0102M --<br>HK40EY0132M --<br>HK40EY0152M --<br>HK50EY0202M --<br>HK50EY0222M --<br>HK50EY0252M --<br>HK60EY0302M --<br>HK60EY0302M --<br>HK60EY0372M --<br>HK60EY0402M -- | 20                   | 15                    | 18                    | 9   | 500<br>560<br>750<br>1000<br>1300<br>1500<br>2000<br>2200<br>2500<br>3000<br>3300<br>3700<br>4000  | 17 (0.670)<br>18 (0.719)<br>21 (0.827)<br>26 (1.024)<br>28 (1.103)<br>29 (1.142)<br>34 (1.339)<br>35 (1.378)<br>38 (1.496)<br>41 (1.614)<br>43 (1.692)<br>47 (1.850)<br>49 (1.929) | 8 (0.314)  |
| HK30E30561M --<br>HK40E30821M --<br>HK40E30102M --<br>HK40E31121M --<br>HK50E30152M --<br>HK50E30172M --<br>HK50E30202M --<br>HK60E30272M --<br>HK60E30302M --<br>HK60E30332M --   | 30                   | 20                    | 24                    | 12  | 560<br>820<br>1000<br>1120<br>1500<br>1700<br>2000<br>2700<br>3000<br>3300                         | 21 (0.827)<br>26 (1.024)<br>28 (1.103)<br>29 (1.142)<br>34 (1.339)<br>35 (1.378)<br>38 (1.496)<br>43 (1.692)<br>47 (1.850)<br>49 (1.929)   | 10 (0.394) |
| HK30E40391M --<br>HK40E40721M --<br>HK50E40102M --<br>HK50E40142M --<br>HK60E40172M --<br>HK60E40202M --<br>HK60E40242M --   | 40                   | 28                    | 33                    | 17  | 390<br>720<br>1000<br>1400<br>1700<br>2000<br>2400   | 21 (0.827)<br>28 (1.103)<br>34 (1.339)<br>38 (1.496)<br>41 (1.614)<br>47 (1.850)<br>49 (1.929)   | 14 (0.552) |

**NEW**

\*tested in oil or Galden  
-Other tolerance on capacitance value: please consult us

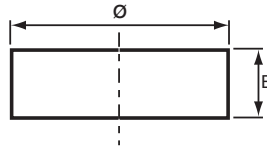
# High Voltage Ceramic Capacitors



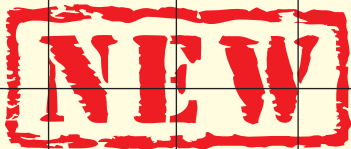
## HP/HW/HK Type – Strontium-based Dielectric

### HK RANGE: UNCOATED DEVICES WITHOUT FIXTURES REFERENCES – VOLTAGE AND CAPACITANCE RANGE

Handling of uncoated devices must be done under strict cleanliness conditions.



| Part Number    | Rated Voltage (kVdc) | Rated Voltage (kVrms) | Test Voltage (kVrms)* | Corona Inception Voltage (kVrms) (<12pC)* | Capacitance ±20% (pF) ±10% on request | Dimensions millimeters (inches) |            |
|----------------|----------------------|-----------------------|-----------------------|---|---------------------------------------|---------------------------------|------------|
|                |                      |                       |                       |   |                                       | Ø ± 2                           | E ± 2      |
| HK30E50281M -- | 50                   | 35                    | 42                    | 21  | 280                                   | 21 (0.827)                      | 21 (0.827) |
| HK40E50411M -- |                      |                       |                       |   | 410                                   | 26 (1.024)                      |            |
| HK40E50501M -- |                      |                       |                       |   | 500                                   | 28 (1.103)                      |            |
| HK40E50561M -- |                      |                       |                       |   | 560                                   | 29 (1.142)                      |            |
| HK50E50751M -- |                      |                       |                       |   | 750                                   | 34 (1.339)                      |            |
| HK50E50851M -- |                      |                       |                       |   | 850                                   | 35 (1.378)                      |            |
| HK50E50102M -- |                      |                       |                       |   | 1000                                  | 38 (1.496)                      |            |
| HK60E51351M -- |                      |                       |                       |   | 1350                                  | 43 (1.692)                      |            |
| HK60E50152M -- |                      |                       |                       |   | 1500                                  | 47 (1.850)                      |            |
| HK60E51651M -- |                      |                       |                       |   | 1650                                  | 49 (1.929)                      |            |
| HK30E61950M -- | 60                   | 42                    | 50                    | 25  | 195                                   | 21 (0.827)                      | 29 (1.142) |
| HK40E63750M -- |                      |                       |                       |   | 375                                   | 28 (1.024)                      |            |
| HK50E60501M -- |                      |                       |                       |   | 500                                   | 34 (1.339)                      |            |
| HK50E60701M -- |                      |                       |                       |   | 700                                   | 38 (1.496)                      |            |
| HK60E60851M -- |                      |                       |                       |   | 850                                   | 41 (1.614)                      |            |
| HK60E60102M -- |                      |                       |                       |   | 1000                                  | 47 (1.850)                      |            |
| HK60E60122M -- | 1200                 | 49 (1.929)            |                       |   |                                       |                                 |            |
| HK50E90501M -- | 100                  | 70                    | 80                    | 40  | 500                                   | 38 (1.496)                      | 43 (1.693) |
| HK60E96750M -- |                      |                       |                       |   | 675                                   | 43 (1.693)                      |            |
| HK60E90751M -- |                      |                       |                       |   | 750                                   | 47 (1.850)                      |            |
| HK60E98250M -- |                      |                       |                       |   | 825                                   | 49 (1.929)                      |            |



\*tested in oil or Galden  
-Other tolerance on capacitance value: please consult us